

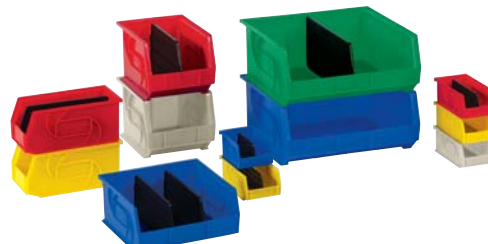
Storage Bins & Accessories Cont.



Hanging and Stacking Part Bins

Used for secure storage of parts and products in industrial assembly operations, healthcare, stockroom, warehouse and hardware merchandising applications.

- Hopper front enables convenient part retrieval
- Wide stacking ridge allows stacking to save space
- Optional dividers keep contents organized and increases versatility
- Bins hang securely on rails or louvered panels

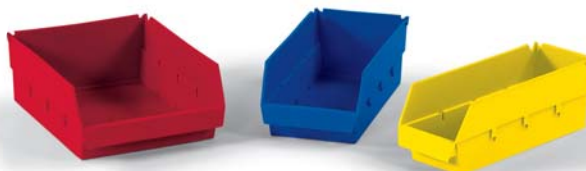


Blue Part No.	Yellow Part No.	Red Part No.	Green Part No.	Stone Part No.	Model No.	Outside Dimensions			Inside Dimensions			Carton Qty.	Carton Weight	Load Cap. On Rack	Price /Each
						L	W	H	L	W	H				
0579152	0579156	0579155	0579153	0579154	PB54-3	5-3/8"	4-1/8"	3"	4-3/4"	3-3/49"	2-13/16"	48	8 lbs.	15 lbs.	\$ 0.85
0579157	0579161	0579160	0579158	0579159	PB74-3	7-3/8"	4-1/8"	3"	6-3/4"	3-3/49"	2-13/16"	48	12 lbs.	25 lbs.	1.56
0579162	0579166	0579165	0579163	0579164	PB105-5	10-7/8"	5-1/2"	5"	10-1/4"	4-3/8"	4-3/4"	12	8 lbs.	30 lbs.	3.93
0579167	0579171	0579170	0579168	0579169	PB108-7	10-3/4"	8-1/4"	7"	10"	6-4/7"	6-3/4"	8	8 lbs.	100 lbs.	6.79
0579172	0579176	0579175	0579173	0579174	PB1011-5	10-7/8"	11"	5"	10-1/4"	10"	4-3/4"	8	8 lbs.	50 lbs.	6.29
0503721	0503722	0503723	0503725	0503724	PB1405-5	14-3/4"	5-1/2"	5"	14-1/8"	4-1/8"	4-13/16"	12	12 lbs.	50 lbs.	5.15
0579177	0579181	0579180	0579178	0579179	PB148-7	14-3/4"	8-1/4"	7"	14"	6-9-16"	6-3/4"	12	12 lbs.	60 lbs.	8.19
0579182	0579186	0579185	0579183	0579184	PB1416-7	14-3/4"	16-1/2"	7"	14"	14-3/4"	6-3/4"	6	6 lbs.	110 lbs.	11.60
0503726	0503727	0503728	0503730	0503729	PB1808-9	18"	8-1/4"	9"	17-1/8"	5-1/2"	8-3/4"	6	6 lbs.	60 lbs.	13.55
0503727	0503732	0503733	0503735	0703734	PB1811-10	18"	11"	10"	17-1/8"	9-1/4"	9-3/4"	4	4 lbs.	75 lbs.	13.55
0503736	0503737	0503738	0503740	0503739	PB1816-11	18"	16-1/2"	11"	17-1/8"	14-5/8"	10-3/4"	3	3 lbs.	75 lbs.	21.09

Economy Shelf Bins

Replaces worn-out corrugated boxes; these durable shelf bins will not break down with time.

- Designed to work with 12", 18" and 24" shelving
- Hopper front design optimizes part accessibility
- Bins nest when empty to save space



Blue Part No.	Yellow Part No.	Red Part No.	Dividers	Model No.	Fits Shelf Size	Outside Dimensions			Carton Qty.	Carton Weight	Price /Each
						L	W	H			
7045097	7045099	7045098	7044887	SB1204-4	12" Deep	12"	4.3"	4"	48	15 lbs.	\$ 1.60
7045100	7045102	7045101	7044888	SB1204-6	12" Deep	12"	5.6"	4"	36	18 lbs.	2.08
7045103	7045105	7045104	7044890	SB1204-8	12" Deep	12"	8.5"	4"	24	12 lbs.	2.30
7045106	7045108	7045107	7044887	SB1804-4	18" Deep	17.6"	4.3"	4"	36	15 lbs.	1.90
7045109	7045111	7045110	7044889	SB1804-7	24" Deep	17.6"	6.6"	4"	24	15 lbs.	2.68
0501537			0501538	SB2404-7	24" Deep	23.7"	6.7"	4"	12	13 lbs.	3.80

Louvered Bins & Systems



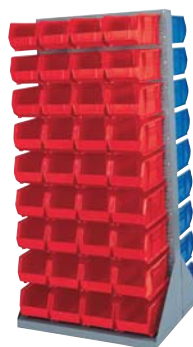
Louvered Hanging Systems



62922 (160 lbs capacity)



62923 (160 lbs capacity)



62927 (2000 lbs capacity)



62928 (120 lbs capacity)

Louvered panels can be mounted on walls, or on the back of shelving. Panels provide a versatile structure that lets you build your own AkroBin systems.

BINS SOLD SEPARATELY

Part No.	Model No.	Description	L	W	H	No. of Cartons	Qty. of Bins to fit 30210	Qty. of Bins to fit 30220	Qty. of Bins to fit 30224	Qty. of Bins to fit 30230	Qty. of Bins to fit 30234	Qty. of Bins to fit 30235	Qty. of Bins to fit 30239	Qty. of Bins to fit 30240	Qty. of Bins to fit 30250	Qty. of Bins to fit 30255	Price /Each
62922	30618	Louvered Panel	18"	-	19"	1	16	16	12	9	9	-	-	-	-	3	\$ 34.17
62923	30636	Louvered Panel	35-3/4"	-	19"	1	32	32	24	18	18	9	8	8	4	6	46.46
62927	30653	Louvered Panel	35-3/4"	32"	75-1/8"	5	288	288	192	144	144	72	72	72	36	48	549.96
62928	98600	Bench Rack	27-3/4"	8"	21"	1	30	30	18	12	12	6	6	6	-	-	74.52

For a full line of Akro-Mills Stacking and Shelf Bins, please visit fastenal.com